



Northwest
INVASIVE PLANT COUNCIL

2007 ANNUAL REPORT

April 18, 2008

Prepared for the Northwest Invasive Plant Council by:
Andrea Eastham, P.Ag., NWIPC Program Manager

EXECUTIVE SUMMARY

The Northwest Invasive Plant Council (NWIPC) operated in 2007 as a single-agency delivery, non-profit society, under the third year of a three-year pilot study funded by the Rural Enhancement Initiative Fund through a grant from BC Ministry of Agriculture and Lands. The “pooled funds” used for invasive plant management came from partner’s contributions. Total expenditures for the year were \$711,974 and \$445,974 was for invasive plant management through contracts in each Invasive Plant Management Area and additional contract work. This level of funding provided inventory and treatment on 1893 sites totaling 1211 hectares. Through our integrated pest management planning and strategic approach, a variety of treatment methods were used including herbicides, pulling, digging, mulching, mowing, and sea-water sprays. Thirty-two percent of the area treated and 32% of the sites received chemical treatment, many in conjunction with mechanical treatment. NWIPC staffing included a program manager, program assistant, a summer student and bookkeeper at a cost of \$145,393, or 20% of the total annual cost. The remaining funds were used to cover overhead costs such as insurance and financial, 15 projects such as the Gitxsan Weeding out the Invaders, programs like the Weed Reporting Hotline (1-866-44WEEDS), promotional material such as brochures, an external review by Dr. Brian Wikeem, and development of database and systems for tracking activities, contributions and expenses. NWIPC was represented at 41 events from Tlell to Valemount such as meetings, fairs, and farmer’s markets, plus delivered several invasive plant training sessions. Invasive plant reports to the Weed Reporting Hotline totaled 120 and all calls were responded to by the IPMA contractors on a weekly basis. The NWIPC in 2007 introduced many more people to the problem of invasive plants in the northwest and increased our membership and number of contributing partners. This will translate into more invasive plant reports, and an increase in invasive plant control.

Table of Contents

INTRODUCTION.....	1
1. ANNUAL PLAN & PROFILE	2
FINANCIAL REVIEW.....	3
2. OPERATIONAL POOLED FUNDS	3
2.1 Income – Operational Pooled Funds:.....	3
2.2 Disbursement – Operational Pooled Funds:	3
2.2.1. Burns Lake IPMA	9
2.2.2. Houston IPMA	9
2.2.3. Prince George IPMA	9
2.2.4. Queen Charlotte Islands IPMA	9
2.2.5. Robson Valley IPMA	10
2.2.6. Stikine-Skeena IPMA	10
2.2.7. Vanderhoof IPMA	10
3. MANAGEMENT FUNDS.....	10
3.1 Income – Management Funds.....	10
3.2 Disbursement – Management Funds	10
Board of Directors.....	10
NWIPC Committees	11
Pesticide Issues	11
Enforcement and Compliance.....	12
Awareness and Extension	12
Mountain Pine Beetle and Invasive Plants	12
Common Tansy Containment	12
3.2.1. Program Management	12
3.2.2. Program Assistants	13
3.2.3. Overhead Expenses.....	13
3.2.3.1. WEEDS database	13
3.2.3.2. External Review.....	13
3.2.4. NWIPC Funded Projects.....	13
3.2.4.1. Community Pastures Weed Awareness Field Days	14
3.2.4.2. Invasive Plant Poster Competition for 4-H at the PGX.....	14
3.2.4.3. Invasive Plant Photo Contest- MAL Summer Extension Student Program	14
3.2.4.4. Immaculate Conception Church and School Canada Thistle Containment	14
3.2.4.5. Potted Weed Display	14
3.2.4.6. Buck Flats Field Day.....	14
3.2.4.7. Fort Fraser Livestock Association 50% Cost Share Noxious Weed Control Program	15
3.2.4.8. Invasive Plant Awareness, Education and Control in Dunster, BC	15
3.2.4.9. Saik’uz Field Scabious Mapping and Control	15
3.2.4.10. Alternative Weed Control in Northern BC- Trialling Goats and Vinegar	15
3.2.4.11. Gitxsan Weeding Out The Invaders	15
3.2.4.12. WIPC Website Development.....	16
3.2.4.13. Ti’az’ten First Nation	16
3.2.4.14. Naikoon Park Scotch Broom Brochure	16
3.2.4.15. Gitga’at/Hartley Bay Knotweed	16
3.2.5. Weed Control 50/50 Program	16
3.2.6. Community Weed Pulls.....	17
3.2.7. Weed Reporting Hotline: 1-866-44WEEDS	17
3.2.8. Education, Promotion and Awareness	17

GOAL OF THE NORTHWEST INVASIVE PLANT COUNCIL

To prevent further damage to the ecosystems of northwest and central BC from invasive alien plants and begin to rehabilitate ecosystems that have been degraded by invasive alien plants.

OPERATING PRINCIPLES OF NWIPC

(Revised April 19, 2007)

- Encourage the public to report invasive plant sightings. (This requires adequate and prompt feedback to persons who report invasive plants).
- Inform the public about invasive plant programs so they can provide relevant comment.
- Develop and maintain a shared invasive plant inventory.
- Assess problems and threats that various invasive plants present to the environment and economy of the area. Categorize invasive plants and prioritize sites for control.
- Prevent the establishment of invasive plants not currently in the region. Prevent or minimize the spread of the invasive plants present in the region.
- Conduct invasive plant programs in the northwest and central BC using Integrated Pest Management principles as described in the 'Invasive Plant Strategy for BC'.
- Encourage all landowners, agencies and organisations operating in northwest and central BC to develop and implement invasive plant management programs.
- Manage and coordinate the activities and responsibilities of the various agencies and private landowners to ensure NWIPC goals are met.

INTRODUCTION

The Northwest Invasive Plant Council (NWIPC) operated in 2007 as a single-agency delivery, non-profit society, under the third year of a three-year pilot project funded by the Rural Enhancement Initiative Fund through a grant from BC Ministry of Agriculture and Lands. Funding for invasive plant management within the seven Invasive Plant Management Areas (IPMA; see Fig. 1) came from partners who contributed through grants, agreements, and contracts; referred to as the pooled funds.

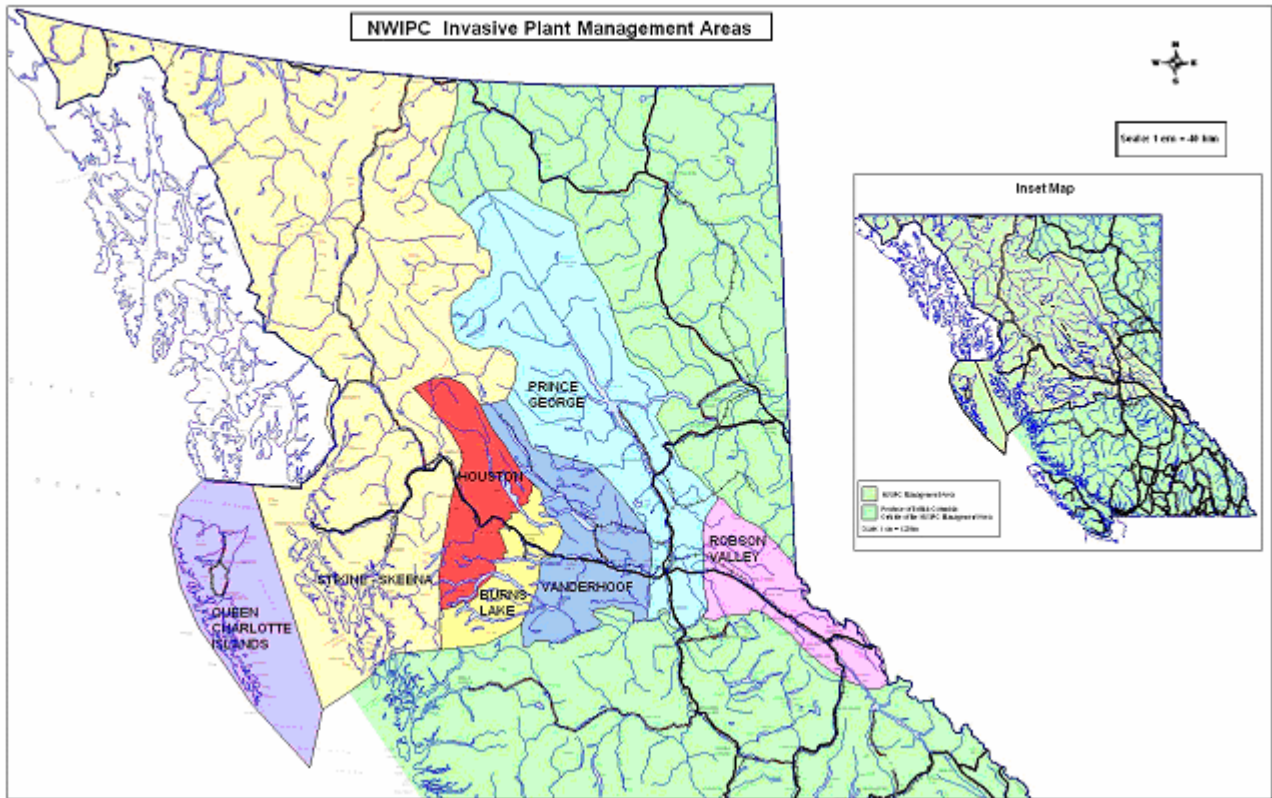


Figure 1. Map showing the seven IPMAs used by the NWIPC to contract and execute invasive plant management activities of inventory, treatment and public awareness.

1. ANNUAL PLAN & PROFILE

The Annual General Meeting was held April 19, 2007 at Columbus Community Centre, Prince George, BC. Approximately 40 members were in attendance. The membership, currently at 315 people, discussed and approved the annual plan, and the NWIPC 2007 Plan & Profile. The main changes were: 1) the addition of the operating principle “*Encourage all landowners, agencies and organizations operating in northwest and central BC to develop and implement invasive plant management programs*”; 2) removed all native plants from the NWIPC invasive plant Profile and lists; and, 3) amended the wording in the site priorities table used in the determination of treatment matrix from “risk” to “opportunity for control”. This document provided direction and strategies for directors, staff, and IPMA contractors in decisions and activities for the year. The 2007 Fall Meeting was held in Vanderhoof on November 20th and provided the membership with a summary on each IPMA by the contractors and reports on funded projects. The Fall Meeting was pre-ceded by the annual contractor forum where contractors, partners, directors and the general membership voiced issues, problems, highlights, and solutions to be considered at the fall meeting. Minutes from both meetings were prepared and sent to all members.

FINANCIAL REVIEW

The fiscal year of the NWIPC ends in December and the 2007 Balance Sheet prepared by Accutech Bookkeeping is in Appendix 1. Transactions due to the late completion of some funded projects and late invoices, both in and out, will be carried over into the 2008 financial tracking as happened in the previous year. Table 1 provides a statement of budgeted to actual dollars by year end of the Council's funds for 2007. A financial review by an accounting firm for 2007 is not yet complete.

Total expenditures for the year were \$711,974.00. Details of income and disbursement for each activity scheduled for 2007 are provided in sections 2.0 and 3.0 below.

The NWIPC also received numerous in-kind contributions of supplies, room charges, and volunteer time as described in Table 2. We are grateful for the corporate support and dedication of our volunteers.

2. OPERATIONAL POOLED FUNDS

2.1 Income – Operational Pooled Funds:

Thirteen partners contributed financially to the pooled funds that were used to provide invasive plant management work in each of the seven IPMAs (Table 1). Partners either provided lump sum grants or paid upon receipt of invoices. New partners for 2007 were the City of Prince George, Village of Valemount and Thompson Creek Mining Ltd. (Endako Mines).

2.2 Disbursement – Operational Pooled Funds:

Tables 3 and 4 itemize operational spending by type of activity for jurisdiction of land, and for geographical area (IPMA), respectively. Both tables were generated from the data provided by IPMA contractors and include only the work done within each IPMA contract. The total cost in Tables 3 and 4 does not equal the total disbursement of pooled funds in Table 1 because of work completed outside the NWIPC contract work such as the work funded by the Ministry of the Environment for scotch broom work in Naikoon Provincial Park.

The 'blank' and 'private' records at the bottom of Table 3 are for information and are not added into the totals because those figures were already allocated to a contributing jurisdiction. These costs represent about 19% of the total costs. Contractor administration, which included data entry, was the largest cost in the 'blank' jurisdiction category representing 54% of the total costs with no jurisdiction. Treatment of invasive plants was the greatest cost in the 'private' jurisdiction category at 67% of total costs.

Table 1. NWIPC 2007 financial review, budgeted and actual.

Annual Report Item No.	Activity	Budget	Actual
2.0	OPERATIONAL POOLED FUNDS		
2.1	INCOME - OPERATIONAL POOLED FUNDS		
	Ministry of Forests and Range	\$200,000	\$150,000
	Ministry of Transportation (MOT)	\$220,000	\$223,000
	Regional District of Bulkley-Nechako	\$30,000	\$30,052
	District C Farmer's Institute	\$10,000	\$10,000
	British Columbia Transmission Corporation	\$10,000	\$10,000
	Canadian National Railway	\$5,967	\$3,300
	Pacific National Gas	\$500	\$500
	Ministry of Environment - specific to Scotch broom in Naikoon Park	\$8,000	\$8,000
	Town of Smithers	\$3,500	\$4,000
	City of Prince George	\$5,000	\$2,682
	District of Houston	\$2,000	\$1,641
	Village of Valemount		\$2,000
	Thomson Creek Mining Ltd. (Endako Mine)		\$800
	TOTAL	\$499,267	\$445,974
2.2	DISBURSEMENT - OPERATIONAL POOLED FUNDS		
2.2.1	Burns Lake IPMA	\$67,000	\$64,998
2.2.1	Burns Lake IPMA (Seacor Services)	\$0	\$2,421
2.2.2	Houston IPMA	\$45,000	\$27,622
2.2.3	Prince George IPMA	\$103,500	103,038
2.2.4	QCI IPMA	\$45,000	\$16,839
2.2.4	MOE - Broom Project	\$8,000	\$8,000
2.2.5	Robson Valley	\$75,000	\$78,098
2.2.5	Robson Valley IPMA (local manual crew)	\$20,000	\$23,871
2.2.6	Stikine-Skeena IPMA	\$45,000	\$45,004
2.2.7	Vanderhoof IPMA	\$66,000	\$66,263
	MOT Payment Schedule Item a) 2007 Invasive Plant management Services		\$20,000
	TOTAL	\$474,500	\$456,154
3.0	MANAGEMENT FUNDS		
3.1	INCOME - MANAGEMENT FUNDS		
	Chequing Account as of Jan 1, 2007	\$115,382	\$115,382
	REF - GIC's for 07/08	\$301,846	\$301,846
	Revenue Canada - GST Rebate 2006	\$34,998	\$33,558
	Ministry of Environment - specific for broom brochure		\$1,350
	District C - Telephone Hotline Funding		\$300
	Invasive Plant Council of BC IAPP training stipend		\$600
	Sale of herbicide in stock		\$1,166
	TOTAL	\$452,226	\$454,201
3.2	DISBURSEMENT - MANAGEMENT FUNDS		
3.2.1	Program Management Contract	\$109,446	\$97,608
3.2.2	Program Assistant's Contract	\$46,000	\$45,455
	2006 Mgmt contract cost dispersed in 2007	\$9,035	\$510
	SUBTOTAL	\$164,481	\$143,573
3.2.3	Overhead Expenses:	35,000	
	Directors' Travel and Honorariums		\$5,350
	Board Meetings		\$434
	Spring Annual General and Fall Meeting		\$768
	Financial Audit; Deloitte & Touche		\$10,300
	Financial		\$508
	Insurance		\$752
	Bookkeeping		\$1,820
	Admin charges; shipping, colour printing, photocopying, etc.		\$10,395
3.2.3.1	WEEDS database		\$4,750
3.2.3.2	External Review	10,000	\$10,000
	Interest and bank charges		\$204
	Fees and Permits		\$40
	SUBTOTAL	\$45,000	\$45,320
3.2.4	NWIPC Funded Projects		
3.2.4.1	BF2007-01 Community Pastures Weed awareness	\$200	\$163
3.2.4.2	BF2007-024H PGX Poster Project	\$75	\$75
3.2.4.3	BF2007-03 MAL Student Photo Contest	\$75	\$75
3.2.4.4	Immaculate Conception School	\$2,350	\$1,175
3.2.4.5	Potted Weed Display	\$1,500	\$771
3.2.4.6	Buck Flats	\$1,600	\$1,785
3.2.4.7	Fort Fraser 50:50	\$5,000	\$2,003
3.2.4.8	Dunster Manual Control (S. Wall)	\$5,000	\$5,240
3.2.4.9	Saik'uz Scabious mapping/control	\$9,364	\$4,682
3.2.4.10	UNBC	\$9,800	\$9,800
3.2.4.11	Gitxsan Weeding Out the Invaders	\$10,000	\$9,000
3.2.4.12	Website (EDI)	\$7,840	\$3,920
3.2.4.13	Tl'azt'en Nation	\$8,600	\$1,750
3.2.4.14	Scotch broom brochure	\$1,350	\$4,167
3.2.4.15	Gitga'at/Hartley Bay	\$10,000	\$0
	SUBTOTAL	\$72,754	\$44,853
3.2.5	50:50 Weed Control Program	\$30,000	\$8,690
3.2.6	Community Weed Pulls		\$852
3.2.7	Telephone Hotline 1-866-44WEEDS	\$1,225	\$688
3.2.8	Education, Promotion and Awareness	\$14,550	\$11,842
	TOTAL	\$20,997	\$25,820

Table 2. In-kind contributions to the Northwest Invasive Plant Council in 2007.

Organization	Description of in-kind contribution
BCTS Terrace	Paid expenses for trainers for IP workshop
Nechako Valley Regional Cattlemen's Assoc.	Shared display booth expenses and man-power
District "C" Farmers Institute	Sponsored sprayer calibration field days; shared booth at PGX
Spectrum Resources Group	Organized and sponsored herbicide workshop in Prince George, open to all contractors and partners; participate on sub-committees; representation at IPC and IVMA.
Ministry of Forests and Range	Range Branch summer staff organized community pastures; field days; Nadina staff, Nicole Pressey, gave IP training sessions to MFR & BCTS staff, and licensees; Vanderhoof staff, Karen Tabe & Christine Friedrichsmeier, gave many volunteer hours on booths and contributed IP news articles to the local paper; Smithers staff, Marc Schuffert, assisted with IP inventory and reporting in the northwest; provide IAPP training by Laura Kristiansen throughout our region.
Purity Feeds and Dow Chemical	Sponsored a full-day aerial spray seminar in Smithers
Ministry of Agriculture and Lands	Representation at IPC; assistance with organizing and staffing displays; summer student help with displays and events; large mail outs, photocopying, etc.; provided corrections program for on-the-ground treatment.
Graeme's Agricultural Service	Participation on sub-committees; volunteers at display booths
Beryl Hagen	Volunteer hours on the NWIPC display booth and monitoring
Home Depot, Jolly Market Foods, PGI 5 th Avenue, Canadian Springs	Donations of gloves, garbage bags, snacks, fruit, juice boxes, water with hand-pumps for community weed pulls
NWIPC members	Hours of time on the display booths. See events, Table 8.
IASPP (Federal Invasive Alien Species Partnership Program)	Received carabineers with IP cards from federal funded project organized by other IP coordinators

The jurisdictions listed in Table 3 are all the jurisdictions recorded by contractors in alphabetical order. Not all partners contributed to the pooled operational funds as you can see by comparing the pooled funds income in Table 1 with those listed in Table 3. The costs were covered by contributing partners as adjacency work; that is they pay for this work in order to stop the spread on the land that they are responsible for as a future cost-savings. A positive dollar figure in the 'Difference' column means that the contributor paid for treatment and inventory work on other jurisdictions; a figure in brackets means that they got treatment and inventory work in excess of their contributions.

The total cost was highest for the Prince George IPMA, followed closely by the Robson Valley IPMA (Table 4). Supply costs were mainly for herbicides and varied among contract areas due to the use of chemical provided by NWIPC and the Ministry of Forests and Range. All herbicides and supplies, except for flagging and signs, were to be purchased and invoiced by contractors starting in 2007 and this was a change-over year as old supplies were used. Inventory and treatment work was 78% of the overall costs, all IPMAs combined; by IPMA, the percent cost for inventory and treatment ranged from 88% in Vanderhoof IPMA to 71% in the QCI IPMA. However, the QCI IPMA contract was not able to be completed and not all of the data has been submitted. Contractors varied in what costs they coded to Administration and Other and consistency in coding will be emphasized in 2008. All contractors were required to enter their own data in the Invasive Alien Plant Program (IAPP) starting in 2007 and those costs are in either Administration and/or Other.

The information in Table 5 was generated from the Invasive Alien Plant Program (IAPP) between January 13 and April 6, 2008. The area treated and number of sites represents work done mainly by the IPMA contractors, but also includes work done by NWIPC staff, partners and members. Often the contractors inventory and treat a site at the same visit unless weather or other circumstances are prohibitive. Chemical treatments represented 32% of the total hectares treated in 2007, and 32% of the sites. This is typical of invasive plant chemical applications that are small, spot treatments. Mechanical included pulling, digging, mulching, and mowing. The total number of sites treated was less than the 2,415 reported in 2006, but the total number of visits to sites increased from 3,228 to 3,556. Fewer, larger sites seem to have been treated in 2007 with a large increase in the hectares treated mechanically that require two to four treatments per year.

Table 3. Operational invasive plant management costs by jurisdiction from work done by IPMA contractors in our seven areas.

JURISDICTION	SUPPLIES	INVENTORY	TREATMENT	AWARENESS	ADMIN	OTHER	TOTAL COST	CONTRIBUTION \$	DIFFERENCE
BCTC	\$18.18	\$67.93	\$1,183.46	\$73.15	\$375.17	\$214.49	\$1,932.38	\$10,000.00	\$8,067.62
CN	\$0.00	\$1,725.66	\$5,691.51	\$6,500.00	\$0.00	\$0.00	\$13,917.17	\$3,300.00	(\$10,617.17)
District C	\$0.00	\$4,379.09	\$5,659.08	\$0.00	\$0.00	\$44.75	\$10,082.92	\$10,000.00	(\$82.92)
First Nations	\$0.00	\$449.53	\$2,784.99	\$0.00	\$150.00	\$0.00	\$3,384.52	\$0.00	(\$3,384.52)
Fort St. James	\$0.00	\$413.73	\$1,752.38	\$0.00	\$0.00	\$0.00	\$2,166.13	\$0.00	(\$2,166.13)
Fraser Lake	\$0.00	\$132.78	\$0.00	\$0.00	\$0.00	\$0.00	\$132.78	\$0.00	(\$132.78)
District of Houston	\$0.02	\$429.50	\$819.50	\$62.50	\$329.50	\$0.00	\$1,641.02	\$1,641.00	(\$0.02)
MFR	\$1,070.75	\$32,594.97	\$48,576.99	\$8,636.72	\$27,942.95	\$10,488.26	\$129,310.65	\$141,071.00	\$11,760.35
MOE - Omineca	\$0.00	\$302.88	\$350.50	\$16.60	\$0.00	\$0.00	\$669.98	\$0.00	(\$669.98)
MOE - Skeena	\$2.22	\$624.00	\$5,170.50	\$542.00	\$425.00	\$0.00	\$6,763.72	\$0.00	(\$6,763.72)
MOT	\$853.63	\$58,332.92	\$108,810.34	\$7,934.83	\$26,797.04	\$8,894.56	\$211,623.28	\$203,000.00	(\$8,623.28)
Parks Canada	\$0.00	\$196.00	\$0.00	\$196.00	\$0.00	\$0.00	\$392.00	\$0.00	(\$392.00)
PNG	\$0.00	\$0.00	\$59.35	\$0.00	\$0.00	\$0.00	\$59.35	\$500.00	\$440.65
Port Clements	\$0.00	\$0.00	\$74.00	\$0.00	\$0.00	\$0.00	\$74.00	\$0.00	(\$74.00)
City of Prince George	\$0.00	\$438.50	\$2,014.75	\$186.75	\$41.50	\$0.00	\$2,681.50	\$2,681.50	\$0.0
QC City	\$0.00	\$0.00	\$74.00	\$0.00	\$0.00	\$0.00	\$74.00	\$0.0	(\$74.00)
RDBN	\$63.97	\$3,969.64	\$12,700.80	\$1,919.26	\$1,120.26	\$750.72	\$20,524.62	\$30,052.00	\$9,527.38
Town of Smithers	\$0.00	\$175.00	\$4,084.50	\$0.00	\$292.75	\$0.00	\$4,552.25	\$4,000.00	(\$552.25)
Telkwa	\$0.00	\$20.00	\$0.00	\$0.00	\$0.00	\$0.00	\$20.00	\$0.00	(\$20.00)
Telus	\$0.00	\$0.00	\$147.50	\$0.00	\$0.00	\$0.00	\$147.50	\$0.00	(\$147.50)
Thompson Creek Mining	\$0.00	\$159.48	\$733.53	\$0.00	\$0.00	\$0.00	\$893.01	\$800.00	(\$93.01)
Village of Valemount	\$0.00	\$1,668.34	\$2,546.30	\$0.00	\$0.00	\$44.75	\$4,259.39	\$2,000.00	(\$2,259.39)
Vanderhoof	\$0.00	\$1,018.13	\$1,058.21	\$0.00	\$0.00	\$0.00	\$2,076.34	\$0.00	(\$2,076.34)
TOTALS	\$2,008.77	\$107,098.08	\$204,292.19	\$26,067.81	\$57,474.17	\$20,437.53	\$417,378.51	\$409,045.50	\$967.49

JURISDICTION	SUPPLIES	INVENTORY\$	TREATMENT\$	AWARENESS\$	ADMIN\$	OTHER\$	TOTAL\$
Blank	\$1,969.85	\$796.23	\$431.61	\$7,048.37	\$32,846.67	\$17,818.20	\$60,910.63
Private	\$38.92	\$4,538.57	\$13,058.42	\$1,109.53	\$727.01	\$0.00	\$19,471.85

Table 4. Operational invasive plant management costs by Invasive Plant Management Area from work done by IPMA contractors.

IPMA	SUPPLIES	INVENTORY	TREATMENT	AWARENESS	ADMIN*	OTHER*	TOTAL COST
Burns Lake	\$519.94	\$25,630.30	\$21,870.76	\$10,544.84	\$2,228.35	\$4,203.70	\$64,997.89
Houston	\$25.72	\$4,887.41	\$16,938.51	\$2,181.34	\$3,589.31	\$0.00	\$27,622.29
Prince George	\$639.99	\$37,501.36	\$47,467.91	\$3,286.56	\$10,677.91	\$3,464.74	\$103,038.47
QCI	\$311.00	\$3,375.00	\$8,570.50	\$1,581.00	\$3,001.60	\$0.00	\$16,839.10
Robson Valley	\$524.55	\$24,424.13	\$50,636.80	\$2,542.71	\$15,711.24	\$8,129.55	\$101,968.98
Stikine-Skeena	\$122.73	\$6,455.00	\$26,741.46	\$1,574.80	\$10,110.30	\$0.00	\$45,004.29
Vanderhoof	\$561.30	\$17,441.73	\$40,969.56	\$1308.49	\$3,046.14	\$2,936.02	\$66,263.24
TOTALS	\$2,705.23	\$119,714.93	\$213,195.50	\$23,019.74	\$48,364.85	\$18,734.01	\$425,734.26

* Admin and Other include data entry.

Table 5. Area (ha), number of sites, and number of contractor visits for invasive plant sites managed by NWIPC among all Invasive Plant Management Areas in 2007. Data extracts from IAPP.

Invasive Plant Management Area	Area (ha)				Number of Sites				Number of Visits*
	Chemical	Mechanical	Inventory	Total	Chemical	Mechanical	Inventory	Total	Total
Burns Lake	7.64	12.45	5.40	25.49	51	47	4	102	289
Houston	44.63	40.67	1.61	86.92	131	98	9	238	344
Prince George	8.81	25.52	523.39	557.72	80	177	45	302	723
Queen Charlotte Islands	0.00	44.50	205.69	250.19	0	76	68	144	41
Robson Valley	19.52	61.27	49.32	130.11	127	301	62	490	984
Stikine-Skeena	31.72	46.75	9.95	88.42	157	161	22	340	547
Vanderhoof	1.88	12.20	58.40	72.48	60	166	51	277	628
TOTALS	114.19	243.22	853.76	1211.31	606	997	261	1893	3556

* These numbers compare to the figures reported in the 2006 Annual Report, Table 4.

2.2.1. Burns Lake IPMA

Spectrum Resources Group Ltd. had the invasive plant management contract in this area in 2007. It was the first season in the Burns Lake area for Spectrum. No field scabious or Marsh plume thistle has been found yet, but as elsewhere, orange hawkweed is pervasive. Common tansy was on the majority of new sites and spotted knapweed was contained on existing sites. The final testing and report was completed by Seacor Environmental Inc. on a misapplication of the herbicide, picloram. Testing of domestic water lines and surface water on Tintagel Road found that picloram levels were less than the detection limit and therefore below the applicable Contaminated Sites Regulation IW and DW standards. This concludes the testing from the July 2006 herbicide treatment incident.

2.2.2. Houston IPMA

Graeme's Agricultural Services once again had the contract in this area for invasive plant management. The weather out west in the spring and summer of 2007 limited treatment in some areas. Focus was on control of field scabious, common tansy and spotted knapweed. The spotted knapweed in the Donaldson Pit is visibly reduced after 12 years of treatment. The Buck Flats field scabious containment line is still being held even though much of the treatment has to be manual.

2.2.3. Prince George IPMA

The IPMA was managed by Spectrum Resources Group Ltd. with crews who are familiar with the Prince George area. Leafy spurge was inventoried and treated for the first time, but the majority of new sites had common tansy. The marsh plume thistle containment line was moved west and we are now in a position to keep this species within the containment boundaries. Spectrum personnel were invaluable in directing the corrections crew provided through a Ministry of Agriculture and Lands initiative. The crew worked hard on marsh plume thistle outside the containment line where herbicides could not be used. The corrections crew in this IPMA is welcome, and much needed, additional labour.

2.2.4. Queen Charlotte Islands IPMA

Mike Cheney and his son, Thomas, continued working on their historical sites with innovative manual treatments such as salt water, mulching, and root wrenches. The root wrenches are proving effective on burdock and the scotch broom. Mike completed a scotch broom risk assessment for the Ministry of Environment and helped NWIPC with the production of a Scotch Broom Brochure. Mike passed away unexpectedly on November 2, 2007. He was NWIPC on the islands and is sadly missed.

2.2.5. Robson Valley IPMA

The valley had two contracts let in 2007; one to Spectrum Resources Group Ltd. for overall invasive plant management, and one to Beryl Hagen specifically for manual control in identified sensitive areas. The two contractors worked well together killing weeds, responding to hotline calls, working with partners, and providing invasive plant education and awareness. The majority of new sites were spotted knapweed followed by common tansy. The eastern boundary of the marsh plume thistle containment line was held, but orange hawkweed is appearing everywhere throughout the valley. Bull and Canada thistle, toadflax (both common and Dalmatian), diffuse knapweed, hawkweeds, marsh plume thistle, and oxeye daisy were also found in the IPMA but not necessarily treated.

2.2.6. Stikine-Skeena IPMA

Graeme's Agricultural Services once again had the contract in this area. Some sites could not be reached this year due to the flooding. Control of marsh plume thistle in Prince Rupert area was successful and a containment line is no longer required. Common tansy was found and treated near Dease Lake, and between Meziadin to Stewart. Treatment was completed in provincial parks for the first time with good cooperation between contractor and the parks staff. The focus was on tansy and knapweed throughout the IPMA.

2.2.7. Vanderhoof IPMA

The contract in this area was completed by Matt Harder. Field scabious was a focus in 2007 with all new sites outside the containment area inventoried and treated. A large infestation on 20 acres of private land was treated this year in hopes that we can eliminate this containment area. New common tansy sites were found and treated in most cases. This IP brought in a new partner at Endako Mine. Brown knapweed was inventoried for the first time. Matt helped NWIPC with training and treatment with three First Nations bands: Saik'uz, Nautleh, and Tachie.

3. MANAGEMENT FUNDS

3.1 Income – Management Funds

Funding for running the NWIPC program for 2007 came from the pilot project lump sum provided in 2005 from the Rural Enhancement Fund under the adjudication of the Inter-Ministerial Invasive Plant Working Group.

3.2 Disbursement – Management Funds

Board of Directors

The 2007 NWIPC budget, as approved by the membership at the April AGM, was managed by the board of directors. The board members met nine times in various locations throughout the northwest (Prince George, Smithers, Burns Lake, and Vanderhoof) or by tele-conference. Directors were in constant communication between meetings and individual directors assisted

with funded projects and development of post-pilot planning. The membership appreciates the dedication and commitment from the board members, a number of whom do so, on a volunteer basis. There were some changes to the board over the year as reflected in Table 6.

Table 6: NWIPC Directors for 2007.

Representation	Director	Affiliation
Environmental, Conservation & Naturalist Groups	Paul Glover	Northwest BC Coalition for Alternatives to Pesticides
First Nations	Ron Winser	Tl'at'zen First Nation
First Nations	Myrtle Muldoe	Gitksan First Nation – Mid-Skeena Watershed
Livestock and Guide Outfitters Associations	John Davidson	Smither's Cattlemen's Association
Livestock and Guide Outfitters Associations	Trevor Tapp	Nechako Valley Regional Cattlemen's Association
Local Government	Ian Hayes	Regional District of Bulkley Nechako (new)
Local Government	Tanya Thompson	Regional District of Bulkley Nechako (resigned)
Local Government	Ralph Roy	Regional District of Bulkley Nechako
Membership at Large	Ron Anthony	Members at large & District "C" Farmers Institute
Provincial Government	Denise McLean, Chair	Ministry of Agriculture and Lands
Provincial Government	Bob Drinkwater, Secretary	Ministry of Forests and Range
Transportation and Utility Companies	Geoff Helfrich	BC Transmission Corporation (new)
Transportation and Utility Companies	Mike Verschoor	BC Transmission Corporation (resigned)

NWIPC Committees

The members who work on the various committees are another important source of direction and dedication to the NWIPC. The committees meet as needed and work by email, phone and in person. There were five committees in 2007.

Pesticide Issues

Reviews issues and makes recommendations to the NWIPC membership regarding pesticide usage and issues. This has included herbicide application in community pastures, discussion on providing herbicides to 50/50 applicants, jurisdiction issues and a Pesticides Issues Communications Flow Chart and emergency response plan. This year they confirmed issues around the new herbicide Milestone (Aminopyralid): continued registration has been confirmed; the Ministry of Environment said no to including aminopyralid along with glyphosate in regulation 74 of the Integrated Pest Management Act

in regards to Pesticide Free Zones (PFZs). Work on pesticide specific response to spills and other incidents and jurisdiction issues are ongoing. Targeted monitoring IP sites on wet areas may occur by MoE in 2008.

Enforcement and Compliance

The committee is currently on hiatus following the distribution of IPCs guidebook on agency responsibility and supporting legislation. Their goal is to address issues such as enforceable infractions involving NWIPC, pertinent legislation, NWIPC's legislated responsibilities, and enforcement responsibilities and options.

Awareness and Extension

The committee makes recommendations about promotional material such as t-shirts and water bottles as well as information mail outs and brochures. They assist with promoting the NWIPC through events that educate an ever increasing segment of the public.

Mountain Pine Beetle and Invasive Plants

Their objective is to investigate proactive approaches to issues arising from the MPB epidemic. This has included reviewing a FSP to determine the responsibilities of the harvesting companies and the development of a position statement for NWIPC.

Common Tansy Containment

The purpose of the committee was to delineate a containment area for Tansy in the western portion of the NWIPC operating area. An informal containment area was suggested and verified during the 2007 field season and will be further tested in 2008.

3.2.1. Program Management

The program manager for 2007 was Andrea Eastham, P.Ag. The three major functions were: working with the board of directors to deliver the program as planned using the approved budget, the Strategic Plan and Profile and the 2004-2007 Action Plan; managing the IPMA contracts; working with partners to deliver on-the-ground work using the agreed to strategies and matrix to meet their needs. The manager's time was also devoted to building new partnerships, managing funded projects, supervising the production of the newsletter, and building public awareness through events, training sessions, weed hotline, newspaper articles, and development of information and promotion items. Fall 2007 saw the review of the three-year pilot project by Dr. Brian Wikeem that required field and office time.

3.2.2. Program Assistants

The technical assistants in 2007 were a first-year CNC Forestry Student and a new employee who is a graduate of UNBC in Environmental Studies. The two staff members supported the program manager, and amongst other things, produced the newsletter, ran the Community Weed Pull program, manned the weed hotline, organized having the NWIPC information display booth, with potted plants, at events from Tlell to Valemount, tracked down land owners and provided support to our IPMA contractors, pulled weeds and completed a biological agent release.

3.2.3. Overhead Expenses

Overhead expenses included: hosting the spring and fall meetings for the membership, housekeeping items such as office supplies, insurances, financial audits, bookkeeping, and shipping. There were also costs associated with having nine board meetings with 11 directors who live between Smithers and Prince George. Many of the directors do not receive wages while doing NWIPC work as a board member. Past directors received a one time honorarium for their years of work during the pilot project, and a \$75 honorarium per board meeting-attended was put in place for current directors.

Included in this year's overhead budget were two one-time expenses:

3.2.3.1. WEEDS database

This was a contract to design, build, populate, produce reports and document a database in MSAccess® that is loaded with the contractors' data from invoices and tracking sheets. The database checks that their invoices are correct and match the tracking sheets. In turn, the data are used to generate reports and invoices for the contributing partners.

3.2.3.2. External Review

NWIPC contributed financially to the external review conducted by Dr. Brian Wikeem, Solterra Resources Inc. The review was jointly funded by NWIPC, East Kootenany Invasive Plant Committee (EKIPC), and the Inter-Ministry Invasive Plant Working Group (IMIPWG) via the Ministry of Agriculture and Lands. EKIPC was the other pilot project in the province and both pilots were reviewed to "determine if the single agency delivery models are effective and cost efficient ways for government to manage invasive plants on Crown land". The final report "Northwest Invasive Plant Pilot Project Review" was provided to the board of directors and is available upon request.

3.2.4. NWIPC Funded Projects

Funding of a wide variety of invasive plant projects provides awareness and education on invasive plant issues, identification and treatment. The 15 projects in 2007 ranged from fun weed-pulling days with young 4H groups, to development of First Nations invasive plant programs, to research through UNBC as described below.

3.2.4.1. Community Pastures Weed Awareness Field Days

NWIPC assisted the Ministry of Forest and Range staff and members of the community pasture associations in delivering two field days, one at Giscome and one at Wren Community Pastures. The field days were the result of consultation last winter between pasture association members, Ministry of Forests and Range staff, and NWIPC.

3.2.4.2. Invasive Plant Poster Competition for 4-H at the PGX

To expand awareness of invasive plants to youth, 4-H members produced poster boards of priority invasive plants and displayed them at the Prince George Exhibition (PGX). All participants received a T-shirt and weed ID carabineer. Posters were judged and gift certificates were awarded for 1st, 2nd and 3rd place.

3.2.4.3. Invasive Plant Photo Contest- MAL Summer Extension Student Program

The Ministry of Agriculture and Lands runs a photo contest for the Summer Extension Assistant program. Students across BC are trained in photography and provided with cameras. The contest provides high quality images of weeds while increasing awareness of the issues posed by invasive plants. Funding from NWIPC supplemented the "Weed" category of the photo contest.

3.2.4.4. Immaculate Conception Church and School Canada Thistle Containment

This project addressed the need to remove a major outbreak of Canada thistle on school grounds and to prevent its spread to neighbouring properties. This involved removing the thistle during a community work bee/BBQ, educating parishioners and neighbours about invasive plants and rehabilitating the infested area.

3.2.4.5. Potted Weed Display

A potted weed display has been the centerpiece of the weed education program since 2003. It is a hands-on way to demonstrate what invasive plants are. The display tours with the NWIPC information booth to fairs and markets around the region. A home-schooled student from a local farm provided care and maintenance, found new plants for us, and helped load and unload the potted weeds numerous times, any day and at all times of the day.

3.2.4.6. Buck Flats Field Day

The Topley 4-H Club initiated a large hand-pulling event that included other local 4-H Clubs and interested community members to combat and contain the field scabious infestation along Buck Creek. This informative and fun event was held June 25, 2007 and included guest speakers, a BBQ as well as some serious weed removal!

3.2.4.7. Fort Fraser Livestock Association 50% Cost Share Noxious Weed Control Program

Fort Fraser Livestock Association members were able to participate in a cost share program to help cover the cost of purchasing herbicide to treat invasive plants on their property. Reimbursement was paid for a maximum of 20L of herbicide or a total of \$250. All equipment and labour costs were covered by the landowner. NWIPC contributed funds for reimbursement.

3.2.4.8. Invasive Plant Awareness, Education and Control in Dunster, BC

Members of the Dunster 4-H Community Club manually controlled invasive plants along community roadways. The group increased community awareness of the issues raised by invasive plants by hosting the NWIPC information booth at the annual "Cattlemen's Ball". Historically this project has been an important fundraiser for the 4-H club.

3.2.4.9. Saik'uz Field Scabious Mapping and Control

The goals of this year-long project are to complete an inventory of invasive plants found on the Saik'uz First Nation reserve, manually treat infestations on Saik'uz and adjoining property, and rehabilitate severe infestation sites. The primary focus of this project is field scabious.

3.2.4.10. Alternative Weed Control in Northern BC- Testing Goats and Vinegar

UNBC researcher Annie Booth conducted research to identify efficient and cost effective thistle control without the use of herbicides. The effectiveness of goat grazing compared to vinegar applications on thistle were tested in Prince George. Repeated applications of 8% vinegar decreased the Canada thistle, but the same treatment has also decreased the desirable vegetation in the test plots because the vinegar is not selective. Mowing in conjunction with grazing goats was successful because the re-growth was desirable forage. The four goats are now 10 goats and were a social success with the local community.

3.2.4.11. Gitxsan Weeding Out The Invaders

The Gitxsan Midskeena Watershed has run a very successful "Weeding Out the Invaders" invasive plant program since 2005. The program consists of several components including inventory and treatment and awareness including an invasive plant stand at Pioneer and Aboriginal Days. In 2007, treatment and inventory of IPs was completed on their traditional lands as well as the forest service roads, side roads and highways. A presentation was prepared for delivery to the other watersheds.

3.2.4.12. NWIPC Website Development

A contract was let with Environmental Dynamics Inc. to develop a website for NWIPC. Working with Funktion Design & Media and the NWIPC program manager and directors, the content and design is complete. Look for us at www.nwipc.org.

3.2.4.13. Tl'az'ten First Nation

This project aims to develop and implement an invasive plant management program while working with Tl'az'ten Nation community members. The program will inventory invasive plants and sites, develop a coordinated action plan, implement treatment directed by local values and priorities, and create awareness in the community. There was a late start in 2007, but the project will be on-going.

3.2.4.14. Naikoon Park Scotch Broom Brochure

The Ministry of Environment provided direction and financial support to NWIPC for the development of an informational brochure on Scotch broom on behalf of the BC Parks office in Tlell for distribution to Naikoon Park visitors. The brochure highlights biological facts about broom and gives guidelines for removal. NWIPC contributed funds for the printing and provided personnel to develop the brochure (see Table 1).

3.2.4.15. Gitga'at/Hartley Bay Knotweed

The identification of a serious knotweed infestation in Hartley Bay led to a partnership with the Gitga'at. The NWIPC did budget for this project, but no work was completed because of the late season. We will continue to develop this partnership to provide training to community and staff members of the Hartley Bay Band and the Gitga'at Lands and Resources Program so that an invasive plant management program can be developed and implemented. This will include training in identification of invasive plants, inventory, treatment techniques and standards. Work will also be done to increase awareness of invasive plant issues within Hartley Bay and Gitga'at Territory.

3.2.5. Weed Control 50/50 Program

The NWIPC 50/50 program is designed to help landowners recover some of their costs of treating invasive weeds. Landowners may be eligible for a 50% reimbursement if they are having a certified professional treat an "eligible weed" (a list of species is included with the application). Rebates were considered to a maximum of \$500.00, and exclude contractor travel costs. Thirty-three applications were received in 2007, and 22 participants were reimbursed with amounts ranging from \$70.80 to \$500.00 for a total of \$8,690.00 (Table 1).

3.2.6. Community Weed Pulls

A community weed pull is a hands on event designed to promote public awareness and involvement in invasive plant management. Community groups learn about invasive plants and hand-pull priority invasive weeds on sensitive, pesticide-free sites. In recognition of their good work the NWIPC presents the community group with a \$250 honorarium. NWIPC participated in an Invasive Plant Council (IPC) initiative to pilot the weed pulls across the province. We gained tactical support from this initiative through working with other IP committees and completed three events in 2007 (see Table 8).

3.2.7. Weed Reporting Hotline: 1-866-44WEEDS

The hotline is one tool in our Early-Detection/Rapid-Response strategy. Through the education and awareness programs we increase the ability of local citizens to recognize invasive plant species and call in to report. The toll-free number is also used by the general public to request information or express concerns, and by members, partners, directors, and contractors to contact the NWIPC office. This last category of calls is not included in Table 7. The majority of calls were reporting weed sites that in turn were passed on to our IPMA contractors for assessment.

Table 7. Number of calls received in 2007 on the NWIPC hotline, 1-866-44WEEDS, by type of call.

IPMA	Requesting Information	General Comment	Reporting a Site	Other	Total Calls
Burns Lake	10	0	26	0	36
Houston	5	1	18	2	26
Prince George	23	3	51	2	79
Robson Valley	1	0	8	1	10
Stikine-Skeena	3	1	1	0	5
Vanderhoof	7	0	16	1	24
Out of Area	2	0	0	0	2
Total Calls	51	5	120	6	182

3.2.8. Education, Promotion and Awareness

Education, promotion and awareness is on-going by NWIPC contractors, staff, directors and members. The Education and Awareness committee assisted in developing and producing materials such as the hotline business cards, fridge magnets, T-shirts, ball caps (new for 2007), brochures and display items. Table 8 lists the 41 formal opportunities we took advantage of in 2007 to bring knowledge and awareness of invasive plant problems and solutions to stakeholders and general public across the northwest.

Table 8. Invasive plant management education opportunities where NWIPC was present in 2007.

<i>Date</i>	<i>Event Description</i>	<i>Location</i>
FIELD DAYS AND WORK BEES		
12-May	Sprayer calibration, Beverly/Mud River Farmers' Institute	Prince George
16-Jun	Giscome Community Pastures Day	Prince George
16-Jun	Immaculate Conception Work-bee BBQ	Prince George
16-Jun	Yellowhead Herford Breeders Field Day	Ft. Fraser
21-Jun	Pine View Sprayer Calibration	Prince George
25-Jun	Buck Flats Field Day	Prince George
13-July	Glennanen Community Weed Pull	Ft Fraser
14-Aug	Wren Community Pasture Field Day	Vanderhoof
26-Aug	Murray Ridge Nordic Ski Club Weed Pull	Ft. St. James
7-Sep	Friends of Valemount Community Weed Pull	Valemount
FAIRS AND TRADE SHOWS		
10-Mar	Horse Industry Seminar and Trade Fair	Smithers
11-Mar	Horse Industry Seminar and Trade Fair	Prince George
11 to 13 May	Vanderhoof Trade Fair	Vanderhoof
5-Aug	Tlell Fair	Queen Charlottes
9 to 12 Aug	PGX shared booth with District "C"	Prince George
17 to 19 Aug	Nechako Valley Fall Fair	Vanderhoof
18 to 19 Aug	Reid Lake Fall Fair	Prince George
24 to 26 Aug	Bulkley Valley Exhibition	Smithers
7 to 8 Sep	Lakes District Fair	Burns Lake
7 to 8 Sep	Houston Trade Show	Houston
PRESENTATIONS AND TRAINING		
16-Mar	1/2 day presentation by Graeme Johnstone and Laura Kristensian on IP ID, reporting sightings & IAPP	BCTS Terrace
Apr	Dave Polster Invasive Plant Course at UNBC	Prince George
17-May	Dow-Spectrum 1/2 day Info session hosted by Spectrum Resource Group	CNC, Prince George
5-Jun	IAPP training at UNBC	Prince George
11-Jun	CCCIPC Public Meeting and AGM	Williams Lake
13-Aug	IP Presentation to Nadina Forest District and BCTS staff	Burns Lake
4-Sep	IP Presentation to Nadina Forest District and BCTS staff	Burns Lake
12-Sep	Helicopter Spraying Seminar organized by local 50:50 participants	Smithers
EVENTS		
26-Jan	PG Cattlemen's Assoc. Forage & Beef Seminar	Prince George
27-Jan	Nechako Valley Forage Seminar & BC Forage Council AGM	Vanderhoof
11-May	BCIA 60th Annual Conference Mtn Pine Beetle Field Tour	Prince George
21-May	Hubble Homestead Garden Days	Hubble Farm
26-May	REAPS Plant Sale	Prince George
9-Jun	Farmers market	Prince George
21-July	Communities in Bloom- A walk in the park	Prince George
11-Aug	Pioneer Days	Old Hazelton
18-Aug	Farmers Market	Terrace
18-Aug	Cattlemens Ball	McBride
24-Aug	Farmers Market	McBride
25-Aug	Farmers market	Valemount
30-Sep	BC Rivers Day	Prince George



Figure 2. NWIPC information display at Pioneer Days, Old Hazelton, BC.

NWIPC staff organized an information blitz targeted at the horticulture and landscape industry. Information packages consisting of a letter of introduction/purpose, weed brochures, Hotline business cards, and a Garden Aware brochure. Companies were phoned first and then visited by staff delivering the packages, or we also made cold-calls. Our packages were well received every where we went and helped develop new members in this important industry for preventing the introduction of invasive plants. The 2007 participants were:

- Art Knapp's Greenhouse and Florist, 2 locations in Prince George
- The Home Depot Canada, Prince George
- Wal-mart, Prince George
- Spruce Capital Feeds, Prince George
- Van Roode Greenhouses, Prince George
- Chilako Valley Garden Centre, Prince George
- Sun-Ko Landscape Supply Ltd., Prince George
- Birch Creek Nursery, Prince George
- Blackwater Plantland, Prince George
- Uncle John's Greenhouse, Prince George
- Atkins' Greenhouse, Bednesti and Fort St. James

- Honeysuckle Garden Centre, Burns Lake
- Glacier View Nursery & Garden Centre Ltd., Smithers
- Irly Building Centre, Telkwa
- Riverside Greenhouses, Houston
- Canadian Tire, Smithers

Brochures and business cards were distributed by several Tourist Information Centres and municipal and regional district offices from Smithers to Valemount. The NWIPC may not yet be a household word, but we introduced many more people to the problem of invasive plants in the northwest and increased our membership. This will translate into more invasive plant reports, an increase in invasive plant control on private land, and a decrease in invasive plant introductions.

APPENDIX 1 – 2007 Balance Sheet

Northwest Invasive Plant Council

Balance Sheet As at 12/31/2007

ASSET

Current Assets

Saving Bank Account-Cashable GIC	0.00	
Chequing Bank Account	<u>105,754.07</u>	
Total Cash		105,754.07
Treasury Bills		-9,853.00
RBC Dominion Secur Acc#83605696-1-3		0.00
Investments-RBC Dominion Securities		-250.00
Accounts Receivable	<u>163,771.46</u>	
Total Receivable		163,771.46
Inventory		2,520.00
Prepaid Expenses		<u>1,227.99</u>
Total Current Assets		<u>263,170.52</u>

Inventory Assets

Equipment	3,800.25	
Equipment-Accum Amort	<u>-316.69</u>	
Net Equipment		<u>3,483.56</u>
Total Inventory Assets		<u>3,483.56</u>

Capital Assets

Leasehold Improvements		<u>0.00</u>
Total Capital Assets		<u>0.00</u>

TOTAL ASSET 266,654.08

LIABILITY

Current Liabilities

Accounts Payable		30,031.14
GST Charged on Sales	-69.93	
GST paid on Meals (50%)	-1.07	
GST Paid on Purchases	<u>1.25</u>	
GST Owing (Refund)		-69.75
Deferred Revenue-Current		250,000.00
Deferred Revenue-Long Term		<u>62,500.00</u>
Total Current liabilities		<u>342,461.39</u>

TOTAL LIABILITY 342,461.39

EQUITY

Retained Earnings

Retained Earnings - Previous Year		148,004.09
Current Earnings		<u>223,811.40</u>
Total Retained Earnings		<u>-75,807.31</u>

TOTAL EQUITY -75,807.31

LIABILITIES AND EQUITY 266,654.08

Generated On: 03/15/2008